

Before we start...

Please make sure you have **downloaded PsychPy!**

<https://www.psychopy.org/download.html>

Introduction to PsychoPy

Hannah Tarder-Stoll
July 29th, 2021

What is PsychoPy?

- Experiment builder with options for online and in-lab testing
- Easily create experiments using either a GUI or written code!
- Python based
- Can often create experiments without writing any code at all

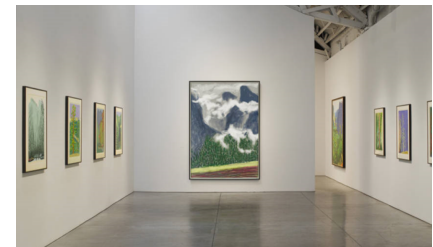


Why use PsychoPy?

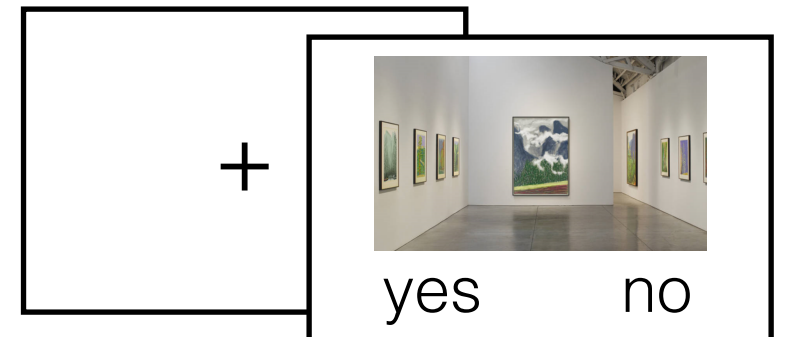
- Specifically built for behavioural science experiments
- Very precise timing (important for reaction times, psychophysics, eyetracking, fMRI etc.)
- Easy integration with Pavlovia
- Supports many different stimulus types (text, images, videos)
- FREE! Promotes open science

Building Blocks of an Experiment

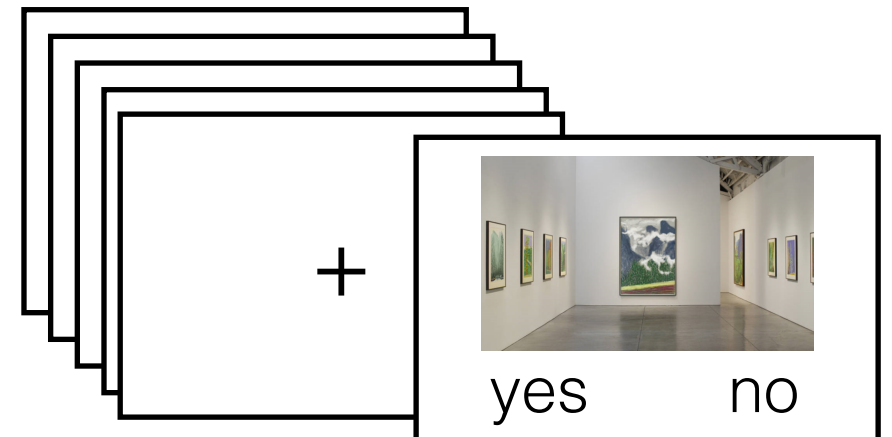
Stimuli (i.e. words, images, etc.)



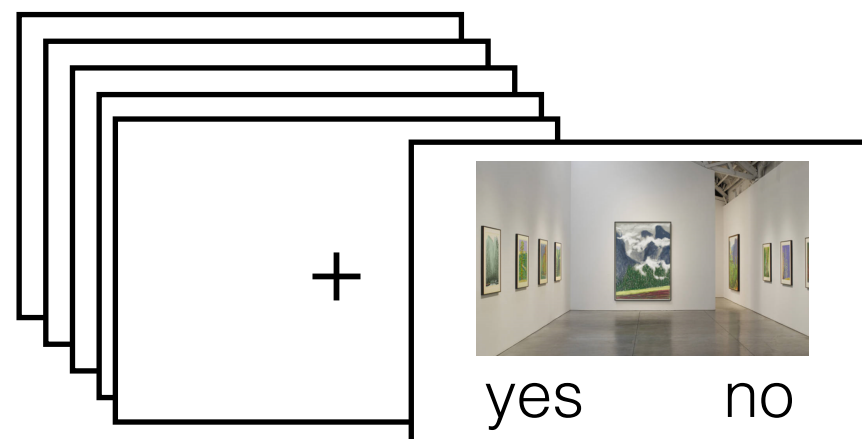
Trial



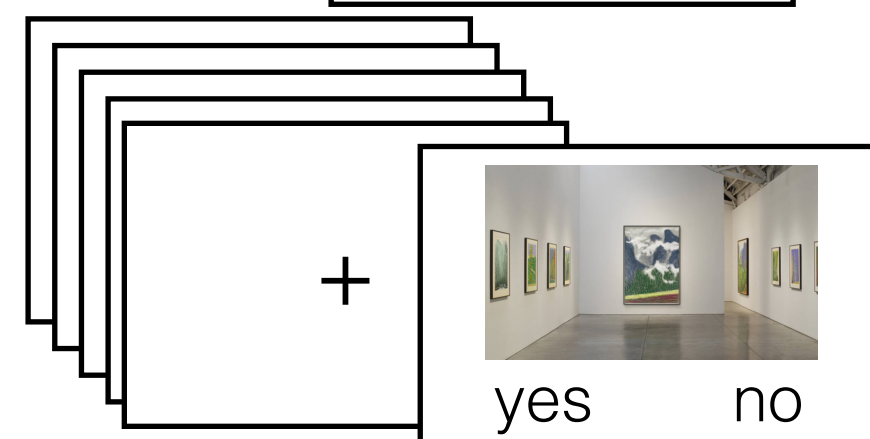
Block



Experiment



Break



The PsychoPy GUI builds up
these components hierarchically
into an experiment

PsychoPy Tour

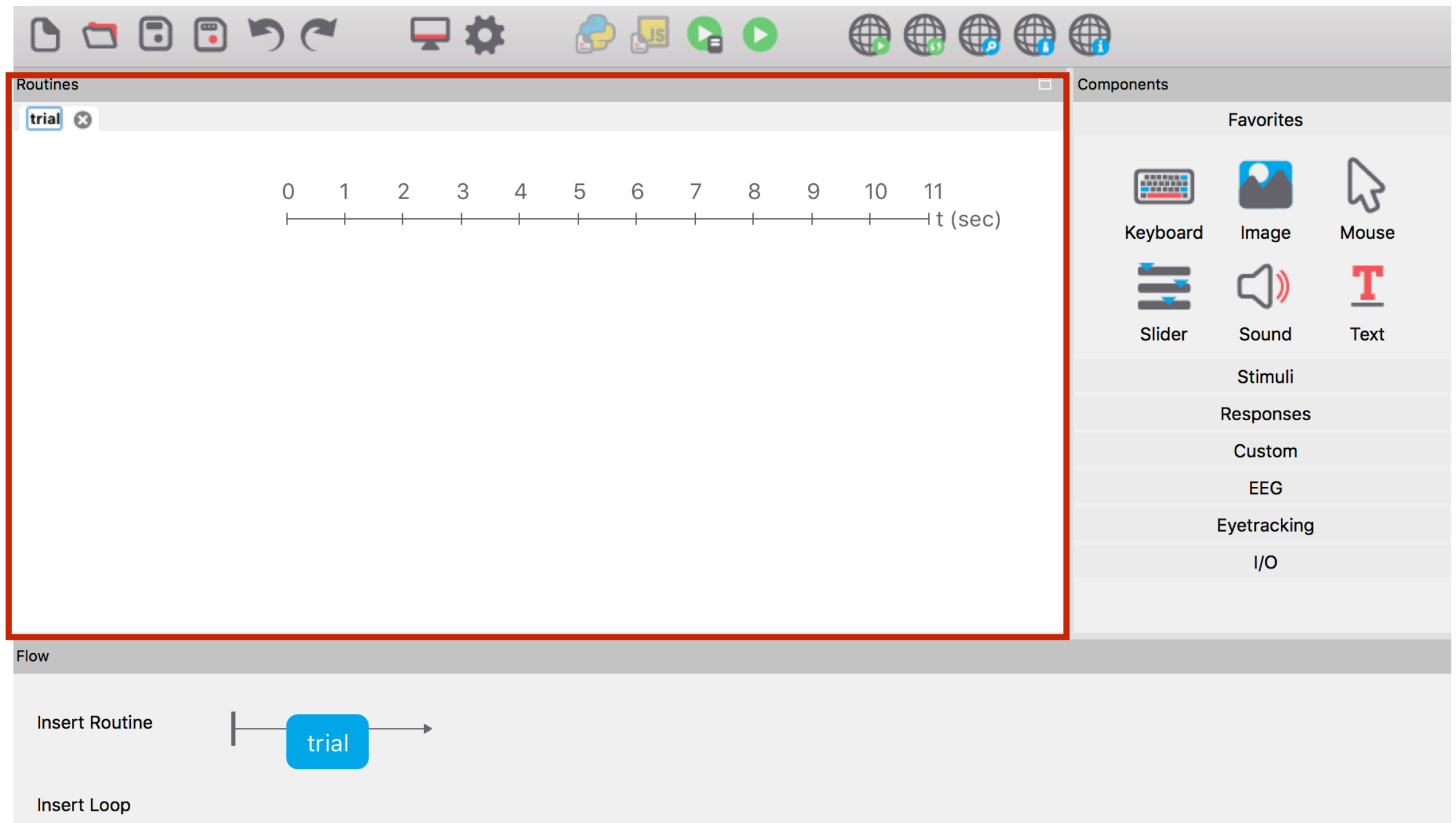
The screenshot displays the PsychoPy software interface, which is used for creating and running psychological experiments. The interface is divided into several key sections:

- Top Toolbar:** Contains icons for file operations (new, open, save, print), undo/redo, and various experimental controls like a monitor, settings gear, and play buttons.
- Routines Panel:** Located on the left, it shows a timeline for the current routine named 'trial'. The timeline is marked from 0 to 11 seconds. Below the timeline, there are buttons for 'Insert Routine' and 'Insert Loop'.
- Components Panel:** Located on the right, it lists various components that can be added to the routine. These are categorized into 'Favorites' (Keyboard, Image, Mouse, Slider, Sound, Text) and other categories like Stimuli, Responses, Custom, EEG, Eyetracking, and I/O.
- Flow Panel:** Located at the bottom, it shows a visual representation of the experiment's flow. In this case, it shows a single block labeled 'trial' with an arrow indicating the sequence of events.

Timeline of your experiment

Create new trials (aka routines) and blocks

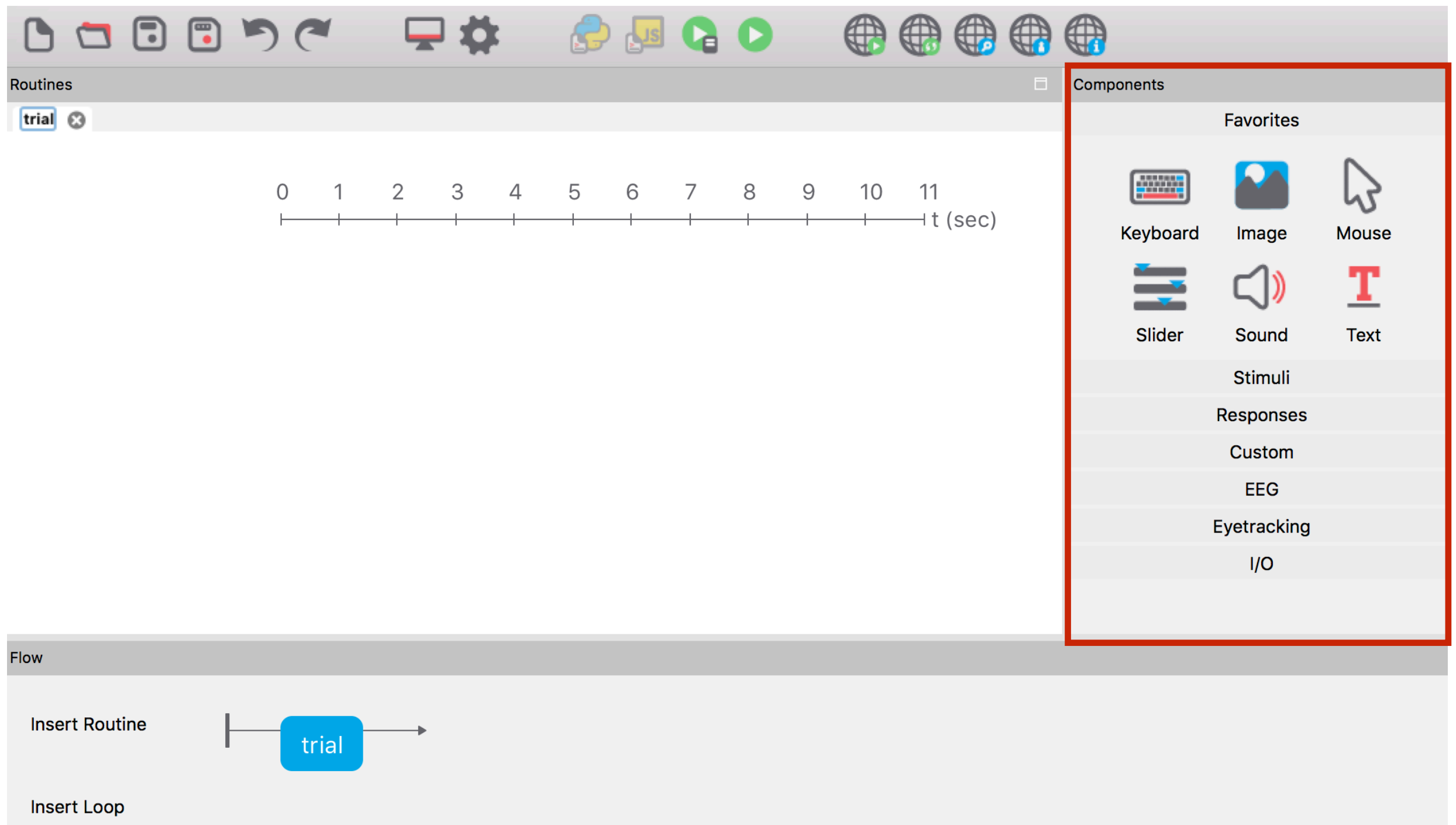
PsychoPy Tour



Create trials here

Define exact timing and add components based on your experiment

PsychoPy Tour



Components are added to routines (trials)

Many options, including response buttons, images, sound, movies, etc.

Let's build an experiment!

Experiment with 2 task:

Stroop Task

Scene Task

Stroop Task

Green

Scene Task



indoor

outdoor

Let's build an experiment!

Stroop Task
x5

Scene Task
x5

Let's start building!

Gather your stimuli (I've gathered them for you)

Create a folder with the name of your experiment

Open PsychoPy!

Challenge

Put words on the screen (i.e. indoor/outdoor for scene)

Add instructions before the experiment starts